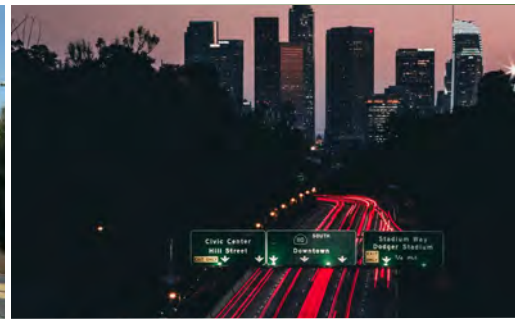




UltraSystems
environmental • management • planning



STATEMENT OF QUALIFICATIONS

Transportation

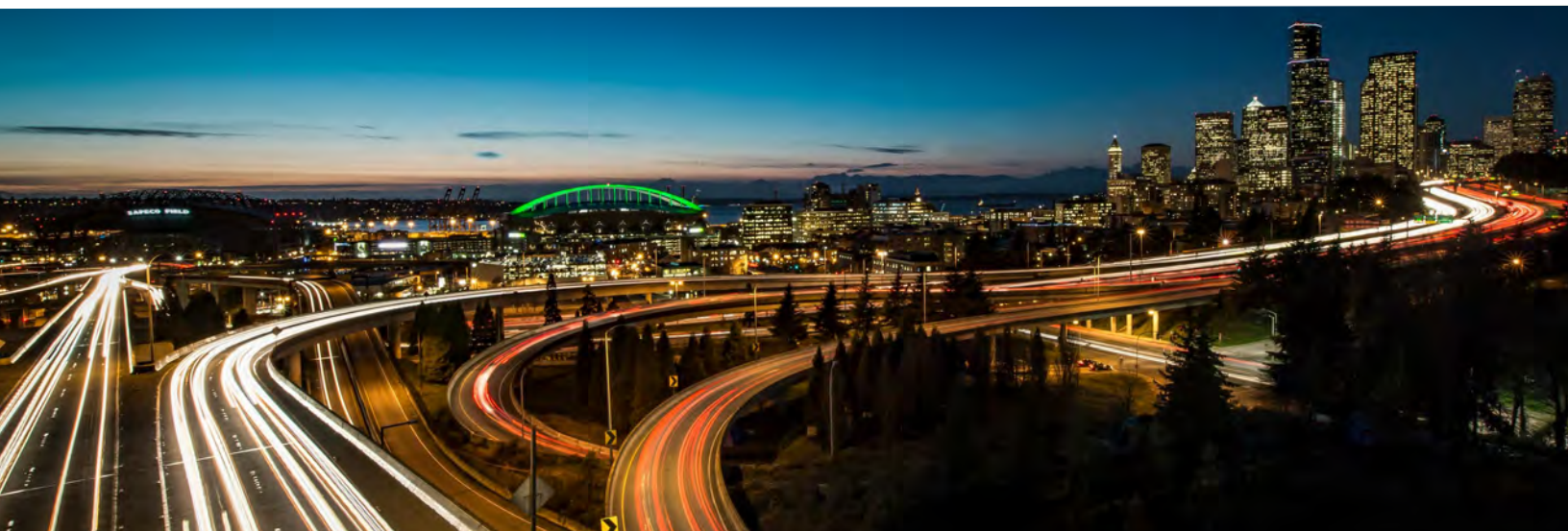


TABLE OF CONTENTS

Company Qualifications	1
Core Business Is Environmental Consulting and Compliance Services	1
Our Project Team.....	1
Qualified Transportation Services.....	1
Firm Stability and Strength Credibility More Than 30 years In Business.....	2
Business Certifications	2
Meeting Client Expectations.....	2
Hands-On Expertise with Regulatory Agencies	3
Understanding of Local Laws.....	3
Experience with Caltrans.....	3
Company Capabilities - Overview	4
Technical Disciplines.....	4
Energy Solutions	7
Project Experience on Utility-Grade Renewable Projects.....	7
Plan of Development	8
Application for Certification.....	8
Key Personnel.....	8
Representative Project Experience.....	11

COMPANY QUALIFICATIONS

UltraSystems Environmental Inc. (UltraSystems) is a full-service, interdisciplinary environmental and engineering consulting firm located at 16431 Scientific Way in Irvine, California. Founded in 1994, UltraSystems is headquartered in Irvine, and maintains offices in El Centro and Grass Valley, California.

CORE BUSINESS IS ENVIRONMENTAL CONSULTING AND COMPLIANCE SERVICES

UltraSystems was established as a consulting practice to assist private industry and governmental agencies navigate environmental regulations. The firm specializes in the National Environmental Policy Act (NEPA), California Environmental Quality Act (CEQA), Clean Air Act (CAA), Clean Water Act (CWA), Coastal Zone Management Act (CZMA), Endangered Species Act (ESA), California Endangered Species Act (CESA), Migratory Bird Treaty Act (MBTA), National Historic Preservation Act (NHPA), Archaeological Resource Protection Act (ARPA), and the Native American Graves Protection and Repatriation Act (NAGPRA), among others.

Our Mission: To ensure that our clients meet their goals by adding value through technical excellence, efficient organization and personal services.

OUR PROJECT TEAM

UltraSystems employs a diverse, multidisciplinary team of talented and experienced engineers, urban and regional planners, scientists, archaeologists, biologists, ecologists, geologists, hydrologists, economists, GIS specialists, architects, and support staff to achieve our corporate mission.

QUALIFIED TRANSPORTATION SERVICES



UltraSystems utilizes its broad range of experience with light rail systems, dedicated busways, bridges, street and highway improvements, airports, bus maintenance facilities, ports and marinas to prepare legally-defensible environmental documents and technical studies in compliance with

SERVICES AND AREAS OF EXPERTISE

Technical Studies

- ✓ Aesthetics
- ✓ Air Quality
- ✓ Greenhouse Gas Studies
- ✓ Noise Evaluations & Analysis
- ✓ Biological Resources & Compliance
- ✓ Health Risk Assessments
- ✓ Historical Resources
- ✓ Socioeconomics
- ✓ Archaeological Resources
- ✓ Geotechnical/ Geologic/ Hydrology
- ✓ Infrastructure Capacity Analysis
- ✓ Water Pollution Evaluation
- ✓ Utility Studies

CEQA/NEPA Compliance

- ✓ EIR and EIS Documentation
- ✓ Mitigation Monitoring
- ✓ Citizen Participation
- ✓ Permits and Entitlements
- ✓ Regulatory Compliance

Planning Services

- ✓ Zoning and Special Purpose Legislation
- ✓ Opportunities and Constraints Analysis
- ✓ Urban Land Use Studies
- ✓ Graphics/ Visual Impacts and Studies
- ✓ Conditional Use Permit Drafting

Construction Environmental Management

- ✓ Stormwater Pollution Prevention Planning
- ✓ Hazardous Building Materials
- ✓ Grading/ Trenching Monitoring

Hazardous Waste

- ✓ Phase I, Phase II ESAs
- ✓ Remedial Action Plans
- ✓ Brownfields Redevelopment

Geographic Information System

- ✓ Customized Mapping
- ✓ Demographic and Economic Data Analysis
- ✓ Spatial Data Analyses
- ✓ GPS Surveying
- ✓ Data Conversion
- ✓ Database Management

NEPA, CEQA, the Clean Air Act (CAA), the Endangered Species Act (ESA), the National Historic Preservation Act (NHPA), the Archaeological Resource Protection Act (ARPA) and the Native American Graves Protection and Repatriation Act (NAGPRA) guidelines.

Preparing and reviewing CEQA and NEPA documents is our core service at UltraSystems. This expertise involves coordination with local, state, federal and other governmental agencies; management of public participation programs; issuance of required legal notices; and incorporation of the document into the overall planning process. Once environmental clearance is obtained, UltraSystems works closely with the lead agency and the staffs of regulatory agencies to obtain environmentally-related permits for the new or modified facility. Finally, during construction and often after, UltraSystems provides field monitors to ensure that mitigation measures are carried out properly and that permit conditions are being followed.

FIRM STABILITY AND STRENGTH | CREDIBILITY | MORE THAN 30 YEARS IN BUSINESS

UltraSystems has been providing consulting services to public and private sector clients throughout California since the founding of the firm in 1994. During those 30 years, the firm has prepared over **7,000** environmental reports, engineering studies or technical studies for clients. UltraSystems continues to specialize in providing comprehensive services, emphasizing quality and client-oriented service.

UltraSystems' team of working professionals offers the highest level of experience, knowledge and commitment in providing environmental and engineering services. Our purpose is to manage each project we undertake efficiently, with respect to the project's work scope, budget and schedule; ultimately producing and delivering a **quality** work product for that project.

BUSINESS CERTIFICATIONS

UltraSystems is certified with various federal, state and local agencies. Currently, the firm holds certification as a federal Disadvantaged Business Enterprise (**DBE**), Small Business Enterprise (**SBE**), Woman-owned Business Enterprise (**WBE**) and federal Woman-owned Small Business (**WOSB**). We also maintain certification through the Supplier Clearinghouse (or CPUC) for utility clients.

MEETING CLIENT EXPECTATIONS

UltraSystems has a long history of providing technological innovation and creative approaches to solving challenging issues for clients. Public agencies and private businesses in California have relied on UltraSystems to keep them in compliance with federal, state and local environmental laws, regulations, and guidelines since 1994. The majority of our work stems from repeat customers who trust us to deliver scientific objectivity, environmental expertise and legally-defensible technical documents, required to meet stringent agency regulations.

UltraSystems' CEQA/NEPA documents have never been challenged in a court of law. This is a direct result of our proven expertise interpreting and advising our clients on complex environmental legislation and regulations. Additionally, our respected working relationships with regulatory agencies are advantageous for our clients to swiftly obtain required permits and project approvals.

HANDS-ON EXPERTISE WITH REGULATORY AGENCIES

UltraSystems staff regularly interacts with federal, state, regional and local regulatory agencies, both as part of our environmental analyses under CEQA/NEPA, and in securing permits for our clients. We keep up to date on the requirements of the U.S. Fish and Wildlife Service (USFWS), U.S. Bureau of Land Management (BLM), the California Department of Fish and Wildlife (CDFW), the U.S. Army Corps of Engineers (USACE), the California Coastal Commission (CCC), California Department of Transportation (Caltrans), the California Environmental Protection Agency (Cal/EPA), Department of Toxic Substances Control (DTSC), State Water Resources Control Board (SWRCB), Regional Water Quality Control Boards (RWQCBs), South Coast Air Quality Management District (SCAQMD), California Air Resources Board (ARB), Imperial County Air Pollution Control District, the California Integrated Waste Management Board (CIWMB) and various other agencies to ensure that our regulatory knowledge is current. UltraSystems has also been responsible for compliance documents, management plans and associated permits. Our firm has also conducted interagency coordination at varying levels of detail and complexity on behalf of clients.

UNDERSTANDING OF LOCAL LAWS

Environmental evaluation of a transportation project requires understanding of the local regulatory context. Staff who would be assigned to your projects would be familiar with the political entities (e.g., city and county), resource agencies and environmental issues of the surrounding area. Of particular interest are the community's general plan (especially the land use, circulation, and noise elements) and specific plans, noise ordinance, climate action plan (if any), and local and regional habitat conservation plans.

EXPERIENCE WITH CALTRANS

Many federally-funded transportation projects in California that used to be managed by the Federal Highway Administration are now administered by Caltrans. UltraSystems serves our municipal and county clients by preparing environmental studies required by Caltrans' Local Assistance Program. These typically include a preliminary environmental study (PES), initial site assessment (ISA), an air quality technical study, an air quality conformity analysis, a PM Conformity Hot Spot Analysis Project Summary Form for Interagency Consultation, an archaeological survey report, a historical property survey report, and a natural environment study.

COMPANY CAPABILITIES - OVERVIEW



TECHNICAL DISCIPLINES

UltraSystems' **Air Quality** experts have prepared hundreds of air quality management plans and performed onsite compliance monitoring for major construction projects. They have prepared air quality analyses for multiple industrial, transportation, infrastructure, commercial and residential development projects. UltraSystems provides baseline assessments of existing conditions; estimates construction and operational emissions; and prepares health risk assessments. UltraSystems' staff are experts in using emissions models such as CalEEMod, EMFAC2011 and CT-EMFAC; and dispersion models such as ISCST3, AERMOD, EDMS and ALOHA. We develop successful mitigation strategies, offering fresh and creative solutions, and have negotiated agency approvals to expedite projects. UltraSystems also helps clients comply with air quality regulations through obtaining permits to construct and operate, preparing annual emissions reports and quadrennial air toxics emission inventories, and responding to notices of violation.



Our experts support CEQA documentation by preparing stand-alone technical studies and report sections. They conduct ambient **Noise Monitoring** to establish background exposures. By using its extensive library of construction equipment noise data, UltraSystems calculates noise exposures during construction and recommends mitigation measures to satisfy local criteria. UltraSystems models traffic noise with the Federal Highway Administration's model, TNM 3.1. We also use the program for preliminary design of soundwalls. Train noise is another one of UltraSystems' specialties. We have in-house software to conduct train noise analyses per Federal Transit Administration (FTA) guidelines.

UltraSystems' Air Quality experts also have the knowledge and experience to assist clients in meeting the **Greenhouse Gas Emission** reductions required by AB 32, the Global Warming Solutions Act of 2006. We have performed inventories for the U.S. Environmental Protection Agency, the California Air Resources board, the South Coast Air Quality Management District, the Ports of Los Angeles and Long Beach, and numerous industrial firms and residential and commercial developers. UltraSystems can estimate GHG emissions for specific projects, and for a client's day-to-day operations. Project-related emissions include those from offroad construction equipment, transportation of building materials and construction waste, including short- and long-term traffic generated by a project. GHG emissions from day-to-day operations include: direct emission from

water and space heating; onsite electrical generation and co-generation; from use of fossil fuel-powered landscaping equipment and other combustion processes; from use of company motor vehicles; and from fugitive sources (such as refrigerant leaks). Indirect emissions normally include those associated with purchased electricity, but can also include such uses as employee business travel, waste disposal and subcontracted services. A GHG analysis can sometimes include the carbon footprint of building materials, appliances and other supplies purchased from others.



In the field of **Biology**, our biologists provide a wide array of services, including field surveys, vegetation mapping, habitat evaluations, threatened and endangered species surveys, jurisdictional delineations, and permitting. We maintain valuable ongoing relationships with the reviewing agencies for large construction projects, including the California Department of Fish and Wildlife, the U.S. Army Corps of Engineers, U.S. Fish and Wildlife Service, U.S. Bureau of Land Management, and U.S. Forest Service.

For transportation projects that would be built on undeveloped land, a variety of biological services may be needed, and we are equipped to provide them. UltraSystems biologists are experienced in major field work in Southern California, using small to large teams of field crews. They offer a broad array of knowledge and are thoroughly familiar with California flora and fauna as well as special-status species' natural history and conservation issues. Biological staff field experience includes reconnaissance-level to focused-level biological field surveys of onsite resources; habitat assessments and plant community mapping; riparian/riverine/vernal pool and fairy shrimp habitat assessments; general botanical and wildlife surveys; protocol surveys that focus on individual plant or wildlife species and conform to agency survey protocols for those species; breeding bird surveys; California Rapid Assessment Method (CRAM) analyses; jurisdictional wetland delineations; wildlife movement evaluations; habitat restoration and site qualitative/quantitative monitoring; preconstruction clearance surveys; and construction biological and permit compliance monitoring. UltraSystems biologists hold federal and state permits, and are qualified to conduct protocol surveys for a wide range of sensitive species.



Our **Cultural Resources** staff are recognized as qualified historians, archaeologists and paleontologists by the federal government, state agencies and all local jurisdictions to which applications have been made. We have experience in all facets of cultural resources projects, including surveys, site testing and evaluation, Native American consultation, historic site recordation and research, mitigation programs, construction monitoring, cultural evaluations of geophysical data, evaluations for National Register eligibility, and paleontological studies.

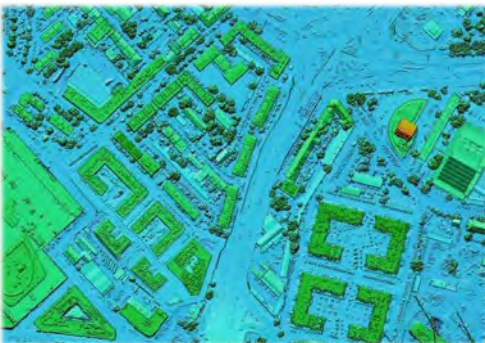


Additionally, UltraSystems employs a highly-qualified team of professionals who provide cultural resource compliance services to assist our clients in adhering to environmental and historic preservation laws, including NHPA, CEQA, NEPA, and NAGPRA for public and private projects in California, Arizona and Nevada. Our team includes professionals with advanced degrees in Archaeology, Anthropology, History and Paleontology, as well as Licensed Historic Architects and Registered Professional Archaeologists (RPAs). Members of our team meet the U.S. Secretary of the Interior's (SOI) Professional Qualification Standards for History, Archaeology, Architectural History and Historic Architecture (36 CFR 61), as well as various county, municipal and state standards and requirements necessary to conduct cultural resources studies. As a result of the quality of their work, our staff has established strong relationships with representatives of key reviewing agencies, such as the State Historic Preservation Office (SHPO).

In the fields of **Geology** and **Seismicity**, our experts have a successful track record of obtaining approvals from the Division of Safety of Dams and the California Department of Water Resources, and have experience in researching and interpreting local seismic ordinances, incorporating existing background information contained in reports, memorandums of understanding (MOU) and other publicly-held documents from cities, counties and regional agencies, and combining this information to craft legally-defensible environmental documents and technical studies.

At some transportation project sites, previous and/or current operations may have led to contamination of soils and groundwater with petroleum products and heavy metals. UltraSystems provides consulting services relating to the identification of **Hazardous Materials**, including Phase I Environmental Due-Diligence, Phase II Site Characterization Studies, and Phase III Remediation Plans. Some of these assessments are included as part of the CEQA process, and many are performed for ongoing businesses or property ownership transfers.

UltraSystems develops general construction **Stormwater Pollution Prevention Plans** (SWPPP) to assist clients in complying with Section 402 of the Federal Clean Water Act NPDES regulations. Every construction site that disturbs one acre or more, or is less than one acre but part of a larger common plan that would disturb one acre or more, must comply with the State of California's General Permit for Stormwater Discharges Associated with Construction Activities. The SWPPP must outline the Best Management Practices (BMP) planned for use on the site to prevent pollutants from leaving the project site. The submission of a SWPPP is required prior to the issuance of an Improvement Plan, Grading Permit or Encroachment Permit.



UltraSystems' **Geographic Information Systems** (GIS) staff is critical to our success, interpreting and presenting complex information in visually-appealing presentations. UltraSystems utilizes spatial analysis and mapping techniques to record significant features of a project study area, such as biological resources, land use coverage, topography and hydrology, geology and artifact densities. Our GIS capabilities enable us to locate, record, analyze and present significant amounts of project data and perform sophisticated modeling and spatial analysis to guide decision-making in site development. High quality cartographic materials and well-defined analyses are standard products for our GIS services.



Accurate and clear mapping, visual simulations, shade/shadow analyses, and photography are essential components of our presentation of environmental analyses and planning projects.

The UltraSystems **Planning** group has recognized experts in the fields of federal and state environmental laws (NEPA/CEQA), planning and zoning laws, social sciences, environmental justice and demographic analysis. Our staff has managed the environmental review for general plan updates and amendments, specific plans and zone changes. We also work with clients to conduct pre-project constraints analysis, feasibility studies and land use compatibility analysis. Our planning group is well versed in coordinating with affected state, federal and local agencies, and we have developed successful working relationships with a number of responsible agencies in Southern California.

ENERGY SOLUTIONS

PROJECT EXPERIENCE ON UTILITY-GRADE RENEWABLE PROJECTS

UltraSystems has served as the environmental compliance consultant of record on several utility-grade (150 MW) solar projects in Imperial Valley. In that role, we have managed biologists, cultural resource monitors and Native American Tribal Observers during these projects' preconstruction, construction and post-construction operational phases.

Specific to Imperial Valley, our firm has been involved with the BLM, USFWS, CDFW, USACE, Caltrans District 11 and DTSC. In addition, we have worked directly with the County of Imperial and the Imperial Irrigation District, and many other local jurisdictions on their own projects.

UltraSystems has performed technical work on approximately 7,000 acres within Imperial Valley. Studies have included a number of technical disciplines, ranging from biological surveys for burrowing owls (BUOW) and flat-tailed horn lizards (FTHL), to complex air quality/greenhouse gas emission analysis work for energy plant development located within the valley.

Some of the energy projects that UltraSystems has successfully worked on include the following:

- ❖ Tenaska, Imperial Solar Energy Center South – Environmental Compliance during Construction and Operations and Maintenance
- ❖ Tenaska, Imperial Solar Energy Center West – Environmental Compliance during Construction and Operations and Maintenance
- ❖ Tenaska, Wistaria Ranch Solar Project – Technical Reports for EIR
- ❖ AES Solar – Well-abandonment for the old Terresa Solar Project
- ❖ San Diego Gas and Electric (SDG&E) – Transmission Interconnection Line Dismantling
- ❖ Imperial Irrigation District (IID) – Environmental Compliance during Construction of the Northern Path Transmission Interconnection Line
- ❖ IID, Bullfrog Dairy Transmission Interconnection Line – CEQA/NEPA documentation
- ❖ Octollio Wind – Biological Resource Surveys
- ❖ SDG&E Sunrise Powerlink – Environmental Compliance/ Construction Monitoring of all Construction Lay-down Yards
- ❖ NextEra (Harper Lake, CA) – Environmental Compliance (Quarterly) for SEGS VIII and IX Project during its Operations, Since 2000
- ❖ SCE Moorpark-Newbury 66-kV Transmission Project – CAGN Protocol Surveys

- ❖ SCE Carodean Substation Expansion Project – Biological Resources
- ❖ SCE Commerce Center Project in Castaic, California – LBVI, SWFL and CAGN Protocol Presence/ Absence Surveys
- ❖ Acconia, Lompoc Wind Energy Project – Environmental Compliance during Preconstruction Activities
- ❖ County of Kern, Sand Canyon Wind Project – EIR
- ❖ SCE Valley-Ivyglen Subtransmission Project – Biological Resources
- ❖ Western Area Power Administration, Sierra Nevada Region, (WAPA), Elverta Substation Expansion, 230-kV Substation – NEPA documentation
- ❖ LADWP, Pine Tree Wind Farm – Biological Resources, Phase I ESA and Sampling

PLAN OF DEVELOPMENT

UltraSystems can prepare and implement Plans of Development (POD) to help its clients meet Bureau of Land Management (BLM) requirements. Preparation and submittal of a POD to the BLM is a prerequisite for initiation of the NEPA documentation and approval process for solar development projects that encroach on BLM-managed land. The POD includes a detailed project description, such as purpose and need, facility descriptions, design and operation, permit requirements, schedules, and financial and technical capabilities of the applicant; detailed description of facility construction, related facilities and systems, operations and maintenance of the system; environmental considerations, maps and drawings. UltraSystems works in close coordination with the client's engineering staff to prepare and submit the POD for BLM approval.

APPLICATION FOR CERTIFICATION

UltraSystems prepares Application for Certification (AFC) documents in accordance with the California Energy Commission's (CEC) Power Plant Site Certification Regulations to construct and operate thermal power plants greater than 50 megawatts (MW) in California. For example, the CEC is the lead agency under CEQA and works closely with other agencies. Affected agencies outside the CEC are asked to review, and if appropriate, comment on the applicant's proposal. The AFC provides a detailed description of the project; an assessment of the project's anticipated impacts on the environment; proposed measures to mitigate those impacts to ensure that environmental issues are properly and responsibly addressed; and a discussion of compliance with applicable laws, ordinances, regulations and standards (LORS). If the project encroaches on federal land managed by the BLM, then it is expected that the CEC and BLM will coordinate their environmental review and issue a joint environmental document to comply with CEQA and NEPA laws and guidelines, with separate decisions. UltraSystems leads its clients through the CEC siting process to achieve approval to construct a power facility.

KEY PERSONNEL

Betsy A. Lindsay, MURP – Founder/CEO

Ms. Lindsay is the founder of UltraSystems Environmental. She has led the firm's growth by focusing on quality and a service-driven approach for its clients. Ms. Lindsay brings over **35 years** of experience managing or providing principal oversight of environmental documents for various types

of projects. Her primary responsibilities in-house include business and project management, contract administration, resource allocation and quality control. She also manages all corporate endeavors and assists with the QA/QC process of many environmental documents. Ms. Lindsay has managed and prepared more than 500 environmental documents, and provided entitlement obligations for large-scale public and private infrastructure projects.

Michael Lindsay, BS – Operations Director

In this role, Mike Lindsay will be responsible for the QA-QC program for this contract. Mr. Lindsay has over **29 years** of relevant experience providing these services. As part of the delivery process, he will participate in key brainstorming and trouble-shooting meetings, and provide ongoing consultation to the project team. The core concept of UltraSystems' QA/QC plan is that independent peer review will also be conducted for all reports, work products and deliverables prior to their submittal to the City. Our goals are to ensure: (1) a high level of accuracy of the evidence that supports our findings; (2) quality of work products; (3) comparability; and (4) completeness of the work product so that the pre-defined goals of each project are met. Mr. Lindsay will ensure that all UltraSystems procedures are adhered to prior to any submittals being delivered to the City. Mr. Lindsay also provides technical assistance to Dr. Rogozen for air quality, GHG and noise studies, when needed.

Hina Gupta, MPI, LEED AP – Vice President, Senior Project Manager

Ms. Gupta is an urban planner with over **17 years** of experience in environmental planning and regulatory permitting for a variety of projects including infrastructure, transportation, renewable energy, commercial, residential, mixed use and master planned development, and educational facilities. Her areas of expertise include: Sustainable Land use, Aesthetics and Visual Analysis, Socioeconomics and Community Impact Assessment, and Green Building Design. Ms. Gupta is a LEED Accredited Professional and has experience working with public agency staff at various city and county departments within southern California.

Billye J. Breckenridge, BA, – Project Manager

Ms. Breckenridge is a Senior Environmental Professional with over **26 years** of comprehensive and diverse experience in environmental consulting. She specializes in regulatory permitting and compliance, CEQA/NEPA document management, preparation, and process, project management, public involvement, jurisdictional and biological resources, and business development. She has managed large NEPA and CEQA projects, 404 permitting projects, and multi-disciplinary teams of technical staff and subconsultants. She is proficient at identifying project permitting needs and negotiating and working with federal, state, and local resource agencies to obtain permits and approvals. She has coordinated and led large biological field surveys and analysis for federal and state protected species, and jurisdictional determinations/ wetlands delineations. She has directed and prepared numerous environmental analysis reports and permitting packages required pursuant CEQA, NEPA, Clean Water Act, Threatened and Endangered Species Act, MSHCPs, and others. She has planned, participated in, and conducted public scoping and other public meetings required under NEPA and CEQA, 404 permitting, and transmission line routing. Her extensive project experience consists of public and private projects including residential/commercial development,

transportation, renewable energy/power plants, flood control, gas pipeline, transmission lines, mining, large utility/water lines, wastewater treatment, schools, and ports.

Michael Milroy, MS – Project Manager

Mr. Milroy is a planner with over **18 years** of experience in community and environmental planning. Mr. Milroy is trained in a variety of project types including residential, commercial, industrial, mixed-use, and specific plan projects. Mr. Milroy's expertise includes California Environmental Quality Act (CEQA) document preparation, project management, and review of supporting technical studies; including, but not limited to, Environmental Impact Reports (EIRs), Initial Studies, Mitigated Negative Declarations, and federally funded National Environmental Policy Act (NEPA) documents.

Michael Rogozen D.ENV – Senior Principal Engineer

Dr. Rogozen heads UltraSystems' air and noise practice. He has over **49 years** of experience in project management, health risk assessment, air and industrial wastewater permitting in California, greenhouse gas emission inventories and carbon footprint studies, ambient air and noise monitoring, dispersion modeling, pollution control technology assessment, economic analysis of air pollution control alternatives, air toxics emission inventory development, offsite consequence analysis, environmental database design, survey design and management, source test design and analysis, subsurface methane investigations, regulatory analysis, and technical writing and editing.

Dr. Rogozen is responsible for consulting, technical project management and business development. He has assisted industrial and governmental clients in complying with federal and local air quality regulations. His work has included managing air compliance audits, preparing applications for permits to construct and operate (including Title V permits), annual emissions reports and responses to notices to comply and notices of violation. He has also conducted many health risk assessments under AB2588, Proposition 65, and SCAQMD Rule 1401. Dr. Rogozen serves as a quality assurance officer for UltraSystems' technical documents and proposals.

Michelle Tollett, BA, ISA – Biological Resources Manager, Senior Biologist

Ms. Tollett has over **25 years** of experience as a field and consulting biologist working with private companies and public agencies throughout California and the Rocky Mountains. She is the chief Sr. Biologist and Project Manager at UltraSystems Environmental in Irvine, California. Her responsibilities include managing the Biological Resources Team; supervising and mentoring staff biologists; delegating work assignments; approving timesheets, expense reports, and overtime requests; overseeing projects from start to finish or managing aspects of projects, managing budgets and project schedules; interacting with client and resource agency representatives; coordinating biological studies and assisting in managing biologists on project sites; coordinating with resource agencies and clients to develop mitigation site design; coordinating with landscape design and maintenance contractors on mitigation sites; preparing and conducting environmental awareness training.

Stephen O'Neil, MA, RPA – Archaeologist/ Anthropologist – Cultural Resource Manager

Mr. O'Neil is a Cultural Resource Manager with over **46 years** of experience. Mr. O'Neil's responsibilities include management of cultural resources tasks for multiple projects, writing and

QA/QC of technical documents, coordinating field surveys and construction monitoring, and leading field efforts for historic and prehistoric site excavations and analysis. Mr. O’Neil has a broad scope of environmental consulting responsibilities and experiences ranging from general project management and technical writing to prehistoric site excavation and construction monitoring. He has worked on projects with clients in both the public and private sectors—including alternative energy, energy transmission, U.S. Forest Service, parks, public works and water resources. He has authored and coauthored numerous technical reports and conducted surveys and monitoring in compliance with NEPA, CEQA, and other federal, state, regional and local laws and regulations. Mr. O’Neil is an active member in the field of cultural resources—he is a board member of the Pacific Coast Archaeological Society and the Orange County Natural History Museum Foundation. He is also a member of the Society for California Archaeology.

REPRESENTATIVE PROJECT EXPERIENCE

Client/ Location	Project	Scope of Work Performed
TRANSIT / GOODS MOVEMENT / PLANNING / RAIL		
Kings County Area Public Transit Agency Hanford, CA	KART Transit Station	Responsible for environmental documentation for the project, including preparing an initial study/mitigated negative declaration (IS/MND) and a Categorical Exclusion to analyze the potential environmental and traffic impacts associated with the proposed new KART station.
Transportation & Energy Solutions, Inc. Ontario, CA	PES for Imperial Highway Traffic Signal Upgrades and Safety Enhancements Project	Prepared a Preliminary Environmental Study (PES) to assess the potential environmental impacts and required technical studies for the project.
City of Fontana	City of Fontana, Safe Routes to School	Provided historical services for the City of Fontana’s Safe Routes to School Pedestrian Improvements Project.
City of Moreno Valley, California Public Works Department	Preliminary Environmental Study for Crosswalk Upgrading Project	Prepared a Caltrans Preliminary Environmental Study (PES) to assess the potential environmental impacts and required technical studies for the project.
PGH Wong Engineering Santa Ana, CA	OC Streetcar – OCTA Construction Management	Observe and assist the Construction Manager (CM) with enforcement of environmental mitigation and monitoring program (MMRP) measures identified in the Environmental Impact Report (EIR).
California High-Speed Rail Authority Orange and Los Angeles Counties, CA	Anaheim to Los Angeles Union Station Segment	Contributed to Environmental Impact Statement/Environmental Impact Report (EIS/EIR). Conducted technical studies (existing baseline), including air quality, biological, and cultural surveys. Prepared scoping documents and Agency Involvement Plans.
Los Angeles Metropolitan Transportation Authority (Metro) Los Angeles, CA	On-call Environmental Services for over 42 Task Orders, including: <ul style="list-style-type: none"> • Eastside Light Rail • Orange Line • Red Line 	Prepared all necessary studies, including, but not limited to, compliance with CEQA and NEPA, Section 106 of the National Historic Preservation Act (NHPA), Federal Clean Water Act (CWA) §§ 404, 402, and 401 regulations, California Department of Fish and Wildlife (CDFW) Section 1602, and Section 4(f) of the Department of Transportation (DOT) Act.
Metro, c/o Hatch-Mott McDonald	Crenshaw Corridor – Advanced Concept Engineering and Environmental Analysis and Permitting	Prepared air quality and visual technical studies for the location of the maintenance and operations facility as well as LRT design options.

Client/ Location	Project	Scope of Work Performed
Metro, c/o LTK Engineering Los Angeles County, CA	Diesel Multiple Unit Technical Feasibility of Three Rail Lines	Prepared an Environmental and Community Impact Assessment, addressed three candidate rail lines, including Ventura, Antelope Valley and San Bernardino Lines. Developed and applied sound exposure levels (SELs) for DMUs, based on test data from operating systems in the U.S. and Canada.
Metro, c/o Wilbur Smith Los Angeles County, CA	Harbor Subdivision Passenger Transportation Operations, Technical Feasibility Analysis	Reviewed former Burlington Northern Santa Fe (BNSF) railroad right-of-way, now owned by Metro, prior environmental documents, and provided areas of environmental concern or sensitivity for the Technical Feasibility Analysis.
Metro Los Angeles County, CA	22-mile Extension of the Red Line Mid-City Segment	Prepared EIS/EIR, including significant public outreach program.
Metro Los Angeles County, CA	Eastside Light Rail Transit	Prepared an Initial Study (IS)/Addendum and Categorical Exclusion (CE), including air, cultural resources, noise, traffic, and visual studies, for proposed enhancements to a prior approved Project EIS/EIR.
Metro Los Angeles County, CA	San Fernando Valley Bus Rapid Transit (BRT) Line	Prepared biological studies, processed Section 1602, 404, and 401 permits, and performed biological monitoring activities.
Metro Los Angeles County, CA	14-mile Orange BRT Line	Prepared Final Revised EIR, analyzing additional alternative routes, in response to Court of Appeals proceedings.
Metro Venice, Los Angeles County, CA	Division 6 Bus and Maintenance Facility Soundwall	Managed engineers, geotechnical investigation, and landscape design.
Metro Los Angeles County, CA	Division 5/ Van Ness Bus and Maintenance Facility and Division 7/ West Hollywood Bus and Maintenance Facility	Prepared Environmental Assessment (EA)/Finding of No Significant Impact (FONSI) and Initial Study/Mitigation Negative Declaration (IS/MND).
Metro Los Angeles County, CA	Division 9 Transportation Demolition and Replacement	Prepared IS/MND.
Orange County Transportation Authority (OCTA) c/o APA Engineering Orange County, CA	OCTA Chokehold Projects, 57 Freeway Northbound and 91 Freeway Eastbound, Technical Review	Technical review of Aerially Deposited Lead Survey, Hazardous Waste Initial Site Assessment, Historic Property Survey Report, and Archaeological Survey Report (HPSR and ASR), Draft Hydrology/Water Quality Study, Draft Paleontological Assessment, Draft Section 4(f) Evaluation, Draft Scenic Resource Evaluation/Visual Impact, and Draft Natural Environment Study.
Caltrans Los Angeles County, CA	On-call services contract relating to the extension of the I-710 Freeway, and mobility improvements from Route 110 to Route 210	Involved with the Design Advisory Group (DAG), as part of the I-710 Freeway Researched all cut and cover projects in the US, technical memo prepared for Caltrans.
Pasadena Gold Line Construction c/o HNTB	Construction-related monitoring for the Gold Line Chinatown Aerial Structure	Provided daily on-site noise monitoring during construction-related activities.
ROADS / HIGHWAYS		
City of Fresno, Fresno, CA	McKinley Avenue Widening Project	Provided technical studies according to Caltrans protocols including cultural resources, noise, hazardous materials, visual impact assessment and air quality.
County of Ventura	Las Posas E. Fifth Street Improvements	Prepared an Environmental Review under the provisions of CEQA and NEPA including an IS/MND, CE and technical studies.

Client/ Location	Project	Scope of Work Performed
City of Fontana, c/o Intex Properties	Cherry Avenue and Victoria Street RAISE Grant funding	Prepared an Environmental Review under the provisions of CEQA and NEPA including a PES, CE and IS/MND.
Cathedral City	Date Palm Drive Pavement Reconstruction	Prepared a preliminary environmental study (PES) for NEPA clearance and filed a Notice of Exemption (NOE) for CEQA clearance.
Peters Engineering Group Clovis, CA	Historic Property Survey Report – County of Tulare	Contracted by the Peters Engineering Group to provide historical and archaeological cultural services for the Avenue 144 & Road 96 Roundabout Design.
City of Lancaster	10th Street West from Lancaster Boulevard to Avenue J and Avenue J from 10th Street West to Challenger Way -- HSIP7-5419 (053)	Contracted by the Planning Department, City of Lancaster, Los Angeles County, to provide historical and archaeological cultural services.
Iteris Santa Ana, CA	San Bernardino - Advanced Dilemma Zone Detection at 49 Intersections	Prepared a Preliminary Environmental Study (PES) for the Advanced Dilemma Zone Detection system for 49 signalized intersections within three roadway corridors in the City of San Bernardino.
Apex Companies, LLC Thousand Oaks, CA	Rancho San Francisco Oilfields	Peer Review and Project Guidance for Biological Resources, Jurisdictional Delineation, Tree Inventory, Compensatory Mitigation Plan, and Regulatory & Permitting Support.
GHD Irvine, CA	OC Loop Segments O, P, and Q	Prepare CEQA and NEPA documentation for the project, including an Initial Study/Mitigated Negative Declaration (IS/MND).
OPC Irvine, CA	55- Widening Improvement Project	Contracted by OPC to conduct a comprehensive survey for asbestos containing materials (ACM) and an XRF survey to inspect and assess potential lead containing paint (LCP)
City of Lancaster	Two Improvement Projects along Avenue I, Between Challenger Way and 35th Street (CHRIS Records Searches)	Contracted by the City of Lancaster to conduct a California Historical Resources Information System (CHRIS) Records Search at the South Central Coast Information Center (SCCIC) in support of the City's Highway Safety Improvement Program grant funded project.
Wolfe Engineering & Design Inc./City of La Mirada	Rosecrans La Mirada Tree Survey	Surveyed for active and/or existing nests of avian species that are protected by the Migratory Bird Treaty Act (MBTA) and the California Fish and Game Code (CFGCA).
County of Los Angeles Department of Public Works (LACDPW) Alhambra, CA	Pine Canyon Road Improvement Project	Prepare and electronically submit to the LACDPW one draft pre-construction survey report that documents the methods and results of the literature review and the survey.
KOA Monterey Park, CA	Elizabeth Lake – 2,453 feet West of Munz Ranch Road to 2,095 feet East of Bouquet Canyon Road	Ensured that biological protection measures, including those requested by CDFW, and best management practices were in place, and were adhered to by the construction contractor
KOA Monterey Park, CA	Lake Hughes Road – Cultural Resources & NES	Conducted a biological assessment, rare plant surveys, tree inventory, and a jurisdictional delineation as part of a Natural Environment Study/Minimal Impact (NES/MI).
Transportation & Energy Solutions, Inc. Ontario, CA	Phase V Of ITS Expansion Project Project No. 753	Prepared an Initial Study/Mitigated Negative Declaration (IS/MND) and supporting technical studies (for Noise, Cultural Resources and Phase I Environmental Site Assessment).
KOA Monterey Park, CA	Newton Canyon Road Storm Repair Project	Prepare a Biological Survey and Report.

Client/ Location	Project	Scope of Work Performed
Transportation & Energy Solutions, Inc. Ontario, CA	North County ITS Palmdale Extension Project Project III of ITS Expansion Project No. 722	Conducted a Phase I Cultural Resources Inventory which included a site pedestrian survey of the grounds, a records and reports search.
City of Fontana	Foothill Blvd Section 4(f) De Minimis Finding	Prepare a Section 4(f) De Minimis Finding document for the Foothill Blvd. project based solely on the HPSR and FOE documents provided by the City of Fontana.
C. Martin Smith Pacific Palisades, CA	Construction Noise Analysis and Report for 405 North Puerto del Mar, Pacific Palisades, CA	Prepare a construction noise analysis and report.
City of Lancaster	Air Quality Conformity Analysis – 10th Street West Bikeway Improvement Project	Prepare an air quality conformity analysis for the 10th Street West Bikeway Improvement Project, Avenue H to Lancaster Boulevard, using the Caltrans annotated template.
KOA Monterey Park, CA	Soledad Canyon Road Slope Restoration/Protection Project	Provide a qualified biological monitor for project activities within Soledad Canyon Road.
Penco Engineering, Inc. Irvine, CA	Cerritos Avenue Gap Closure	Prepare an Initial Study (IS) pursuant to requirements of CEQA Section 21080 and Sections 15060 through 15065 of the CEQA Guidelines.
County of Imperial Department of Public Works El Centro, CA	Environmental Studies for Various Unpaved Roads	Prepare a Natural Environment Study – Minimal Impact (NES [MI]).
Caltrans c/o AMEC Earth and Environmental Victorville, CA	Interstate 15 Mojave River Interchange Reconstruction	Prepared wetlands delineation and GIS mapping.
Caltrans c/o AMEC Earth and Environmental Victorville, CA	US-395 Widening	Prepared wetlands delineation and GIS mapping along US-395 from 0.9 mile south of Kramer Hills to State Route 58 in San Bernardino County Performed desert tortoise surveys along US-395 from 0.9 mile south of Kramer Hills to State Route 58 in San Bernardino County.
Caltrans c/o CNC Engineering Costa Mesa, CA	Street improvements along a 1.2-mile section of Red Hill Avenue	Prepared a preliminary environmental study (PES) to assess the potential environmental impacts and required technical studies for the project.
Caltrans c/o RBF Consulting Coachella, Riverside County, CA	New Spread Diamond Interchange Route 86 South at Airport Boulevard	Prepared IS/EAs and technical studies, including air quality, biological, cultural, land use, noise, natural environment studies, and socioeconomic studies.
City of Camarillo c/o W.G. Zimmerman Engineering, Inc. Ventura County, CA	Adolfo Road Improvement Project	Prepared IS/MND, PES, and technical studies, including air quality, noise, and pedestrian safety.
City of Burbank Los Angeles County, CA	Land Use and Circulation Elements updates to the General Plan	Prepared EIR and revised land use and circulation elements.
City of Costa Mesa c/o CNC Engineering Orange County, CA	SR-55 Downtown Gateway widening	Prepared PES.
Cities of Irvine and Tustin c/o IBI Group	Red Hill Avenue Improvement Project	Prepared IS/MND.
City of La Habra c/o AKM Consulting Engineers Orange County, CA	Hazel Street Improvement Project	Prepared a CEQA Class I categorical exemption.

Client/ Location	Project	Scope of Work Performed
City of La Habra c/o CBM Consulting Orange County, CA	La Habra Boulevard and Idaho Street Intersection Widening Project	Prepared the IS/MND and technical studies, including air quality and noise.
City of La Mirada c/o APA Engineering Los Angeles, CA	Beach Boulevard Improvement Project	Prepared a Categorical Exemption, along with biological and cultural assessments, storm water pollution and prevention plan.
City of Lawndale c/o Huitt-Zollars Irvine, CA	Inglewood Avenue Corridor Widening Project	Prepared PES, categorical exemption, air quality technical report, PM Conformity Hot Spot Analysis Project Summary Form for Interagency Consultation, initial site assessment, archaeological survey report, and historical property survey short form.
City of Lynwood c/o APA Engineering Los Angeles County, CA	Long Beach Boulevard Improvement Project	Prepared a CEQA Class I categorical exemption.
City of Moreno Valley c/o VA Consulting Riverside County, CA	Pavement Rehabilitation Project	Prepared the City's Environmental Information Form (EIF) and a CEQA Class I categorical exemption.
City of Newport Beach c/o W.G. Zimmerman Engineering Orange County, CA	Newport Boulevard widening, including right-turn lane at Hospital Road	Prepared biological assessment and permitting documents.
City of Newport Beach c/o VA Consulting Orange County, CA	Jamboree Road widening, between Bristol and Fairchild Road	Prepared IS/MND and technical studies, including air quality, noise, traffic and biological. Included jurisdictional delineation and coastal permitting.
City of Pomona c/o PENCO Engineering Los Angeles County, CA	Alley Improvement Project	Prepared initial study/negative declaration (IS/ND).
City of Riverside c/o VA Consulting Riverside, CA	Magnolia Avenue Widening and Beautification	Prepared IS/MND, PES, and technical studies, including air quality, noise, and traffic.
City of Riverside c/o VA Consulting Riverside, CA	Cottonwood Avenue and Ellsworth Street Intersection Improvement Project	Prepared a categorical exemption.
City of Seal Beach and Caltrans District 12 c/o W.G. Zimmerman Engineering Orange County, CA	Seal Beach Regional Trail, Segment III and IV, Seal Beach Boulevard to Anderson Street	Prepared the PES and technical studies including water quality and floodplain evaluation.
County of San Bernardino San Bernardino, CA	Fort Irwin Road Widening Project	Performed biological assessment, protocol surveys, jurisdictional delineation, waters/wetlands permits, and USFS management indicator species report/biological evaluation.
San Bernardino Associated Governments San Bernardino County, CA	US-395 Realignment	Initiated Program EIR and constraints analysis. All technical studies completed; project was shelved due to political concerns.
City of South Gate c/o Tetra Tech South Gate, CA	Garfield Improvement, pedestrian, median, urban greening and roadway rehabilitation	Prepared the PES along with NEPA/CEQA CEs

Client/ Location	Project	Scope of Work Performed
BRIDGES / SEISMIC RETROFITS		
City of San Dimas	Golden Hills Road Realignment Project	Preconstruction Sensitive Wildlife Survey and Impact Avoidance , including summary report; Nesting Bird Surveys and Nest Avoidance; Bat Preconstruction Surveys and Impact Avoidance, including summary report if roosting bats are observed on the project site.
City of San Dimas	Golden Hills Road Realignment Project	Preconstruction Sensitive Wildlife Survey and Impact Avoidance , including summary report; Nesting Bird Surveys and Nest Avoidance; Bat Preconstruction Surveys and Impact Avoidance, including summary report if roosting bats are observed on the project site.
KOA Monterey Park, CA	Circle Trail over Topanga Canyon Creek	Prepared an NES report in accordance with the California Department of Transportation (Caltrans) Guidance for Consultants.
KOA Monterey Park, CA	Slauson Avenue Bridge project	Peer Review of Existing Documents, Additional Field Visit – Focused Springtime Bat Survey, and Agency Consultation.
NV5, Inc. San Diego, CA	Dogwood Road Bridge over Central Main Canal Project	Prepare an Initial Study (IS) to identify potential environmental impacts, and a Mitigated Negative Declaration (MND) to adopt measures to avoid or reduce potential environmental impacts to less than significant levels.
Caltrans c/o Hernandez, Kroone and Associates Glendora, CA	Lone Hill Avenue Bridge Widening	Completed a PES to assess the potential environmental impacts and required technical studies for the project.
Port of Long Beach c/o SFI Long Beach, CA	Gerald Desmond Bridge Replacement	Environmental compliance and mitigation during design and construction.
City of Agoura Hills c/o Willdan Engineering	Roadside Drive Bridge Widening Project	Prepared jurisdictional delineation, natural environment study; preparing permit applications.
City of Fontana c/o TYLIN Fontana, CA	Foothill Widening, Malaga Bridge	Prepared initial study (IS), and Technical studies: air quality, GHG, biological, cultural, noise, traffic, phase I ESA, and visual
City of Huntington Beach c/o BCA Huntington Beach, CA	Bridge Preventive Maintenance Program Brookhurst Street Bridge, Magnolia Street Bridge and Warner Avenue Bridge	Prepared PES, NEPA categorical exclusion, initial study (IS), and permit applications.
City of Los Angeles c/o HNTB Los Angeles County, CA	Soto Street Bridge Widening	Prepared PES, CEQA categorical exemption and NEPA categorical exclusion.
City of Los Angeles c/o HNTB Los Angeles County, CA	State Street Overhead Bridge Widening	Prepared Caltrans initial site assessment.
City of Los Angeles c/o HNTB Los Angeles County, CA	Tampa Avenue Bridge over the Los Angeles River Widening	Prepared PES, CEQA categorical exemption and NEPA categorical exclusion and permit applications.
City of Los Angeles c/o MGE Engineering Los Angeles, CA	Glendale Boulevard-Hyperion Avenue Complex of Bridges Improvement Project	Revised Environmental Impact Report/Environmental Assessment (EIR/EA) to Initial Study/Environmental Assessment (IS/EA), permitting, and technical studies, including air quality, biological, visual, and Section 4(f).

Client/ Location	Project	Scope of Work Performed
City of Los Angeles c/o MGE Engineering Los Angeles, CA	Lindley Avenue Bridge Widening	Prepared PES, CEQA categorical exemption and NEPA categorical exclusion.
City of Los Angeles c/o Willdan Los Angeles, CA	Vermont Avenue Overcrossing at US 101 Widening	Prepared PES, CEQA categorical exemption and NEPA categorical exclusion, air quality technical study, PM Conformity Hot Spot Analysis Project Summary Form for Interagency Consultation.
City of Moreno Valley c/o VA Consulting Riverside, CA	Heacock Street Bridge Replacement	Prepared IS/MND and technical studies, including air quality, biological, and noise surveys.
City of Newport Beach c/o VA Consulting Newport Beach, CA	Road Widening of Jamboree Road at MacArthur Boulevard	Performed biological surveys, including vegetation and habitat mapping and wetland delineation, and prepared coastal development permit.
City of Riverside c/o Dokken Engineering Riverside, CA	Van Buren Bridge Replacement	Prepared habitat restoration plan and implemented it
City of Santa Clarita Los Angeles County CA	Sierra Highway Bridge Replacement and Rehabilitation – Historic Bridge structure	Prepared IS/MND and technical studies, including air quality, biological, cultural, noise surveys and Phase I environmental site assessment (ESA).
County of Los Angeles Department of Public Works (LACDPW) Alhambra, CA	On-call Environmental Documentation and Regulatory Permitting (since 1995)	Prepared ISs, technical studies, public facilitation, permit applications, special studies, field activities, and regulatory hearings.
County of Orange c/o KPFF Orange County, CA	Pedestrian Bridge at Modjeska House	Prepared an IS/MND and technical studies, including air quality, biological and cultural resources.
LACDPW Alhambra, CA	Biological Monitoring – Long-term Foothill Blvd. over San Gabriel River Artesia Blvd. over Los Angeles River Aliso Canyon Road over Gleason Canyon Creek	Provided long-term biological monitoring for bats and bird exclusion activities during nesting season Wrap of bridge structures Bat surveys at 8 bridge sites Archaeological monitoring support services.
Metro Los Angeles Los Angeles County, CA	Sepulveda Dam Recreation Area Bridge	Prepared biological assessment and obtained Section 1602, 404, NPDES 402, 401 and LACFC permits.
OCTA c/o Kimley-Horn Associates Orange County, CA	Removal of Santa Ana River Crossings Project – Cities of Costa Mesa, Huntington Beach, Fountain Valley and Newport Beach	Prepared screen check, draft and final program EIR, biological surveys, and obtained §§ 1602, 404 and 401 permits.
County of San Bernardino c/o LAN Engineering San Bernardino, CA	Glen Helen Parkway Grade Separation	Prepared biological technical studies, including a biological constraints analysis, biological survey, rare plant survey, focused wildlife surveys, vegetation classification and mapping, jurisdictional delineation, natural environment study (per Caltrans standards), and Section 7 consultation per the Endangered Species Act (ESA). Prepared water quality study.
OCTA c/o Parsons Orange County, CA	San Juan Creek and Camino Capistrano Interchange Improvements	Prepared of natural environment study (NES), biological surveys, wetland delineation and regulatory permitting with US Army Corps of Engineers, RWQCB and CDFW.
BUS AND MAINTENANCE FACILITIES		
Alhambra Unified School District Alhambra, CA	Conversion of former bus maintenance facility to high school property	Preparation of IS/MND, preliminary endangerment assessment (PEA) and underground storage tank (UST) closure report.

Client/ Location	Project	Scope of Work Performed
Antelope Valley Transit Authority Lancaster, CA	Acquisition of 10-acre, vacant parcel	Preparation of categorical exclusion and Phase I ESA.
City of Bell c/o Gannett Fleming Bell, CA	Gage Avenue Bridge over the Los Angeles River Channel	Prepared IS/MND (i.e., AQ, Biological Resources, GHG, Noise, Phase I, Traffic), Title VI Analysis, Tree Removal Plan.
City of Gardena Transportation Department Los Angeles County, CA	100-bus operation and maintenance facility, including fueling areas	Prepared IS/MND and categorical exclusion.
City of Mesa c/o RNL Design Maricopa County, AZ	Arizona Transit Maintenance Facility, 100-bus facility	Prepared an EA.
City of Commerce Commerce, CA	Transit Maintenance Facility	Prepared NEPA CE, along with the IS/MND and technical studies: geotechnical, soil borings, traffic and Phase I ESA
City of Pasadena c/o MDG-HDR Pasadena, CA	Transit Operations and Maintenance Facility (TOMF), supporting operations and maintenance of Pasadena's Transit and Dial-A-Ride fleets.	Prepared IS/MND (i.e., AQ, Biological Resources, GHG, Noise, Phase I & Phase II, Traffic), Title VI Analysis, Tree Removal Plan.
Foothill Transit Authority Los Angeles County, CA	150-bus, Westside Bus Operation and Maintenance Facility	Prepared EA/FONSI and IS/MND.
Los Alamitos Unified School District Los Alamitos, CA	Modernization of Bus Maintenance Facility	Prepared limited Phase II sampling report, contaminated materials management plan and IS/MND
Riverside Transit Authority Hemet, Riverside County, CA	RTA Bus and Maintenance Facility	Prepared IS/ND and categorical exclusion.
Riverside Transit Authority Perris, Riverside County, CA	RTA Bus and Maintenance Facility	Prepared IS/MND and categorical exclusion.
City of Norwalk Los Angeles County, CA	New 67,000-square-foot transportation facility and public services facility, next to Metrolink station	Prepared EA/FONSI and IS/MND.
SunLine Transit c/o IBI Group Thousand Palms, CA	New administration building and waiting area	Prepared IS/MND, categorical exclusion, and technical studies.
Victor Valley Transit Authority Hesperia San Bernardino County, CA	Bus service operations and maintenance facility, including CNG fueling areas	Prepared NEPA categorical exclusion, IS/MND, and technical studies, including air quality, biological, cultural, and noise surveys.
Capistrano Unified School District San Juan Capistrano Orange County, CA	Bus route reduction plan and traffic study	Prepared IS/MND and traffic study.
County of Riverside Riverside, CA	Beaumont Maintenance Facility	Prepared IS/MND.
FUELING STATIONS		
Studio M of A, Inc. Costa Mesa, CA	Amber Wang Residence at 3710 Decker Edison Road	Prepare a Biological Resources Evaluation Survey and Report.
Clean Energy Port of Long Beach	LNG Fuel Station, Port of Long Beach	Prepared a Storm Water Pollution Prevention Plan, LNG Fuel Station.

Client/ Location	Project	Scope of Work Performed
Trillium Metro's Division 5, Division 6 and Division 7 Bus and Maintenance Facilities	CNG Fuel Stations for Metro Bus and Maintenance Facilities	Prepared EA/FONSI and IS/MND, including air quality and noise studies.
City of Barstow Barstow, CA	LNG-CNG Fueling Station	Prepared a categorical exclusion/categorical exemption.



UltraSystems
environmental • management • planning

16431 Scientific Way
Irvine, CA 92618

P: (949) 788-4900 | F (949) 788-4901
www.ultrasystems.com

